

# TEKOM

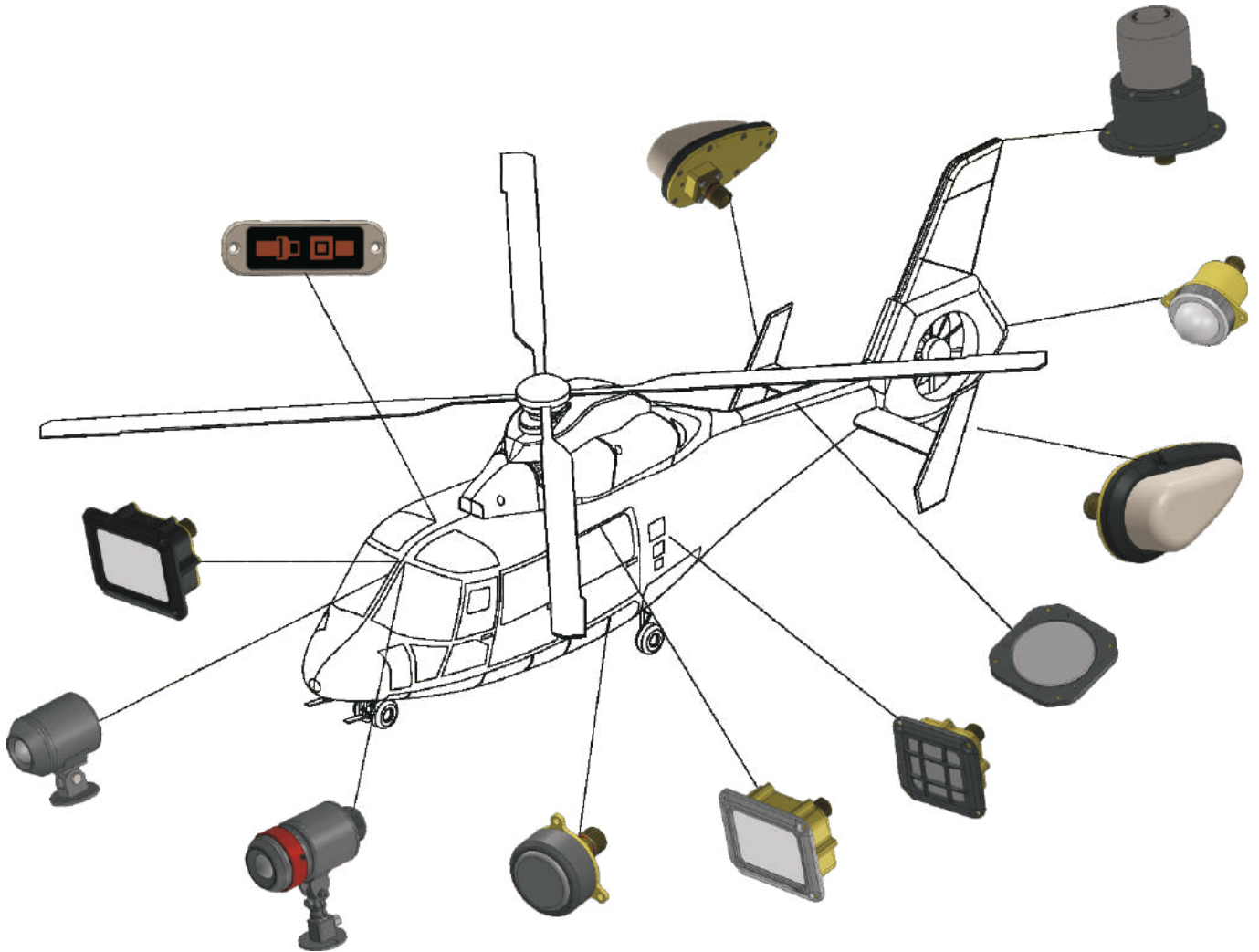
**Savunma ve Havacılık Sanayi A.Ş.**



**HAVACILIK ÜRÜNLERİ**  
**AVIATION EQUIPMENT**

[www.tekom.com.tr](http://www.tekom.com.tr)

2021



**“GÖKBEY, ATAK, HÜRKUŞ Aircraft Programme  
lighting equipment manufacturer”**



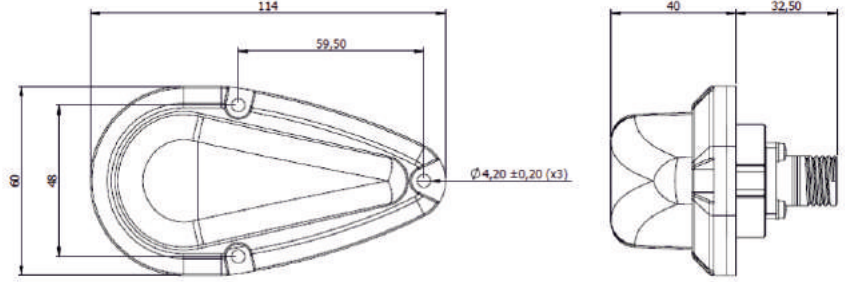
# TEKOM



Discover  
the potential

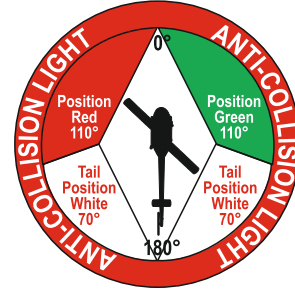
### FORWARD POSITION LIGHT (GREEN)

500010



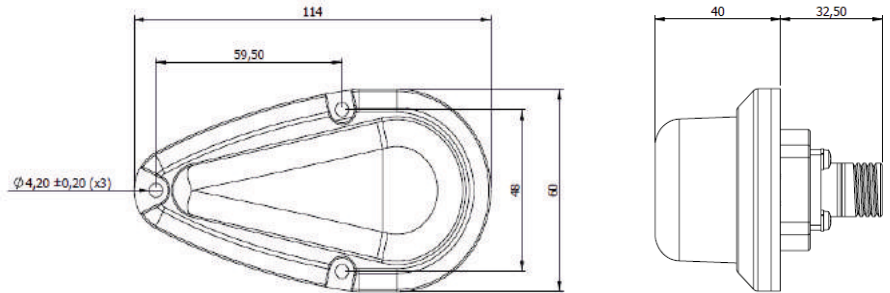
#### Technical Specifications

- Dual Mode: Visible + IR
- Light Source: LED
- Power Supply: 28 VDC
- Power Consumption: 6 W
- MTBF > 20.000 FH
- Operating Temperature: -55°C to +80°C
- RTCA DO-160G Compatible
- MIL-STD-810G & MIL-STD-461F Qualified
- MIL-STD-3009 Compatible
- CS 23/25/29
- Socket: D38999/20JA35PN



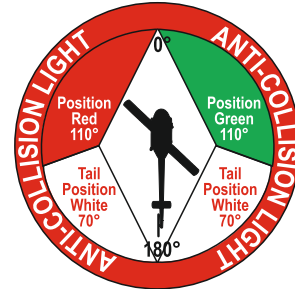
### FORWARD POSITION LIGHT (RED)

500020



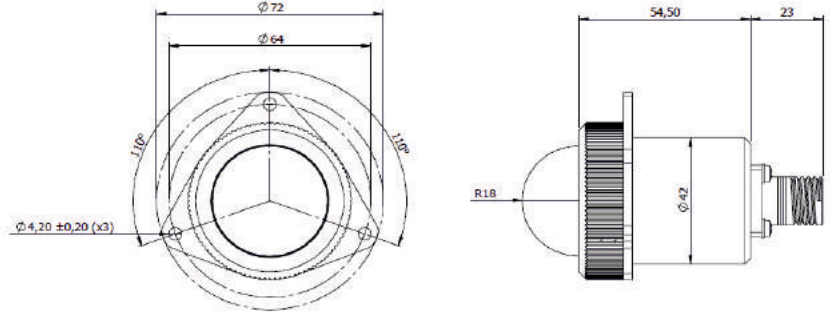
#### Technical Specifications

- Dual Mode: Visible + IR
- Light Source: LED
- Power Supply: 28 VDC
- Power Consumption: 5 W
- MTBF > 20.000 FH
- Operating Temperature: -55°C to +80°C
- RTCA DO-160G Compatible
- MIL-STD-810G & MIL-STD-461F Qualified
- MIL-STD-3009 Compatible
- CS 23/25/29
- Socket: D38999/20JA35PN



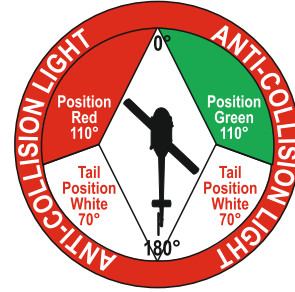
## TAIL POSITION LIGHT

500030



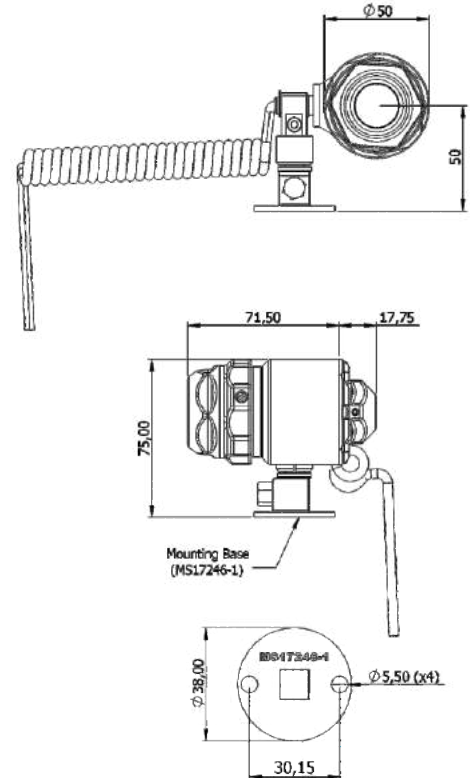
### Technical Specifications

- Dual Mode: Visible + IR
- Light Source: LED
- Power Supply: 28 VDC
- Power Consumption: 5 W
- MTBF > 20.000 FH
- Operating Temperature: -55°C to +80°C
- RTCA DO-160G Compatible
- MIL-STD-810G & MIL-STD-461F Qualified
- MIL-STD-3009 Compatible
- CS 23/25/29
- Socket: D38999/20JA35PN



## COCKPIT UTILITY LIGHT

500041



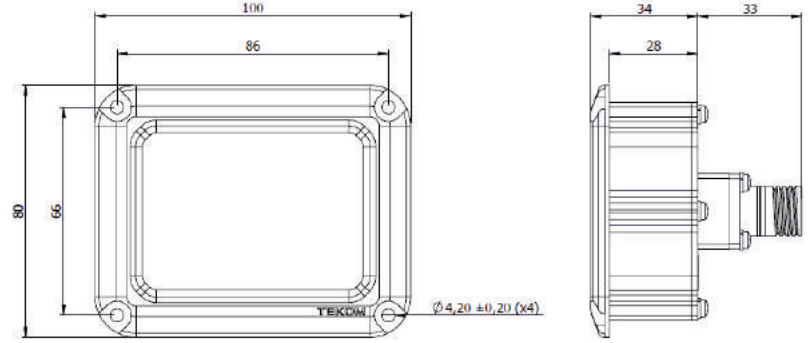
### Technical Specifications

- Flood/Spot - On/Dim/Off
- Light Source: LED
- Power Supply: 28 VDC
- Power Consumption: 3 W
- MTBF > 20.000 FH
- Operating Temperature: -55°C to +80°C
- RTCA DO-160G Compatible
- MIL-STD-810G & MIL-STD-461F Qualified
- MIL-STD-3009 Compatible
- Mounting Base: MS17246-1



### CABIN DOME LIGHT

500050

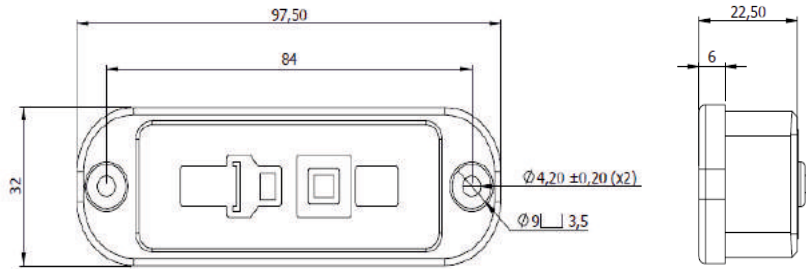
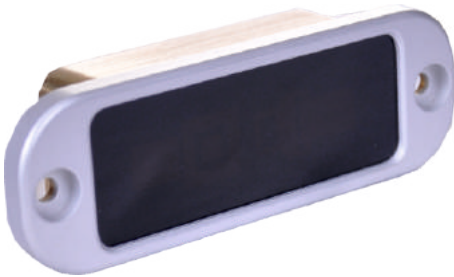


#### Technical Specifications

- Light Source: LED
- Power Supply: 28 VDC
- Power Consumption: 2 W
- MTBF > 20.000 FH
- Operating Temperature: -55°C to +80°C
- RTCA DO-160G Compatible
- MIL-STD-810G & MIL-STD-461F Qualified
- MIL-STD-3009 Compatible
- Socket: D38999/20JA35PN

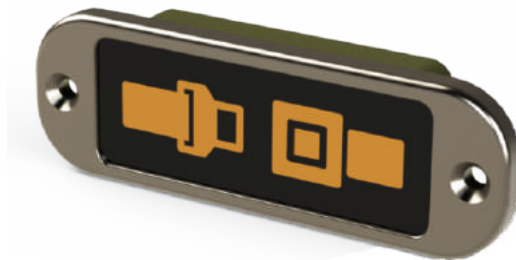
### PASSENGER SIGN LIGHT

500060



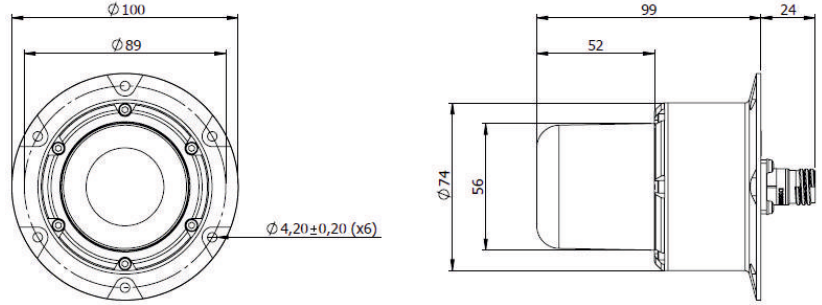
#### Technical Specifications

- Light Source: LED
- Power Supply: 28 VDC
- Power Consumption: 1 W
- MTBF > 20.000 FH
- Operating Temperature: -55°C to +80°C
- RTCA DO-160G Compatible
- MIL-STD-810G & MIL-STD-461F Qualified



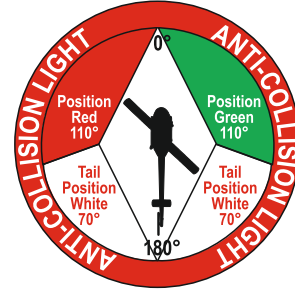
## ANTICOLLISION LIGHT

500070



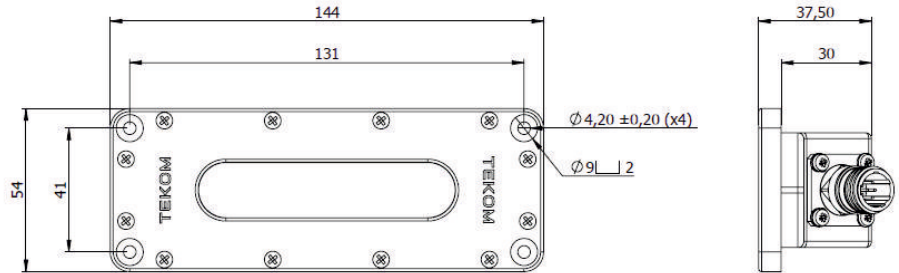
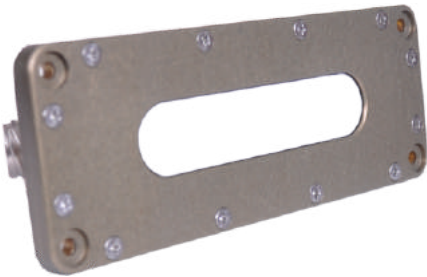
### Technical Specifications

- Dual Mode: Visible + IR
- Light Source: LED
- Power Supply: 28 VDC
- Power Consumption: 13 W
- MTBF > 20.000 FH
- Operating Temperature: -55°C to +80°C
- RTCA DO-160G Compatible
- MIL-STD-810G & MIL-STD-461F Qualified
- Socket: D38999/20JA35PN - D38999/21YA35PN (Hermetic)



## FORMATION LIGHT

500080

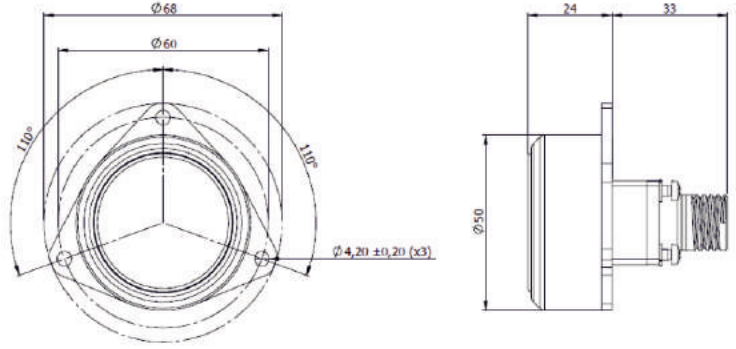


### Technical Specifications

- Dual Mode: Visible + IR
- Light Source: LED
- Power Supply: 28 VDC
- Power Consumption: 3 W
- MTBF > 20.000 FH
- Operating Temperature: -55°C to +80°C
- RTCA DO-160G Compatible
- MIL-STD-810G & MIL-STD-461F Qualified
- MIL-STD-3009 Compatible
- Socket: D38999/20JA35PN - D38999/21YA35PN (Hermetic)

### EXTERNAL EMERGENCY LIGHT

500090

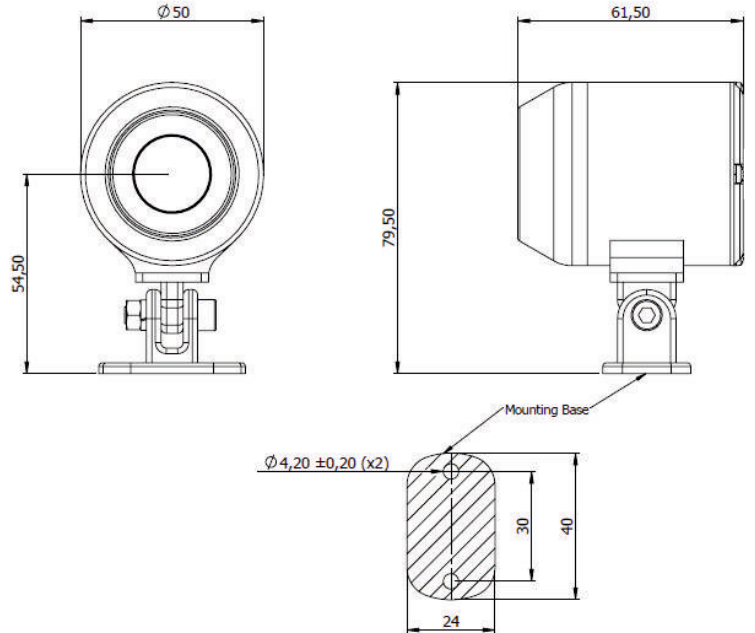


#### Technical Specifications

- Light Source: LED
- Power Supply: 7 VDC
- Power Consumption: 2 W
- MTBF > 20.000 FH
- Operating Temperature: -55°C to +80°C
- RTCA DO-160G Compatible
- MIL-STD-810G & MIL-STD-461F Qualified
- MIL-STD-3009 Compatible
- Socket: D38999/20JA35PN

### STORM LIGHT

500100

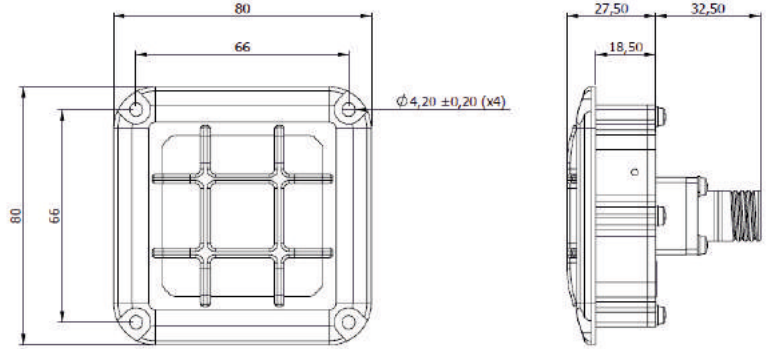


#### Technical Specifications

- Light Source: LED
- Power Supply: 28 VDC
- Power Consumption: 4 W
- MTBF > 20.000 FH
- Operating Temperature: -55°C to +80°C
- RTCA DO-160G Compatible
- MIL-STD-810G & MIL-STD-461F Qualified

### CARGO DOME LIGHT

500110

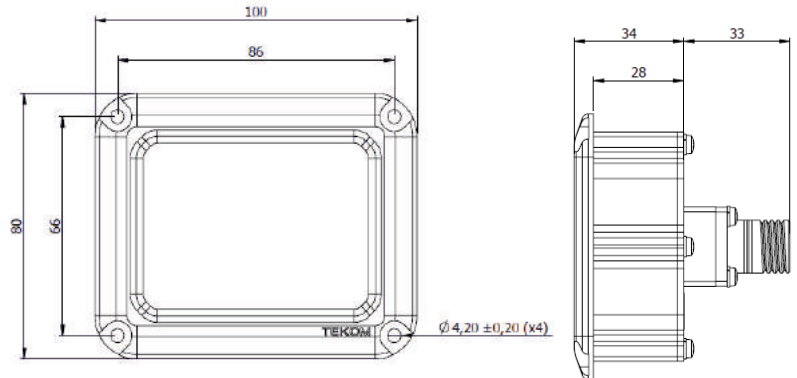


#### Technical Specifications

- Light Source: LED
- Power Supply: 28 VDC
- Power Consumption: 4 W
- MTBF > 20.000 FH
- Operating Temperature: -55°C to +80°C
- RTCA DO-160G Compatible
- MIL-STD-810G & MIL-STD-461F Qualified
- Socket: D38999/20JA35PN

### COCKPIT DOME LIGHT

500120



#### Technical Specifications

- Light Source: LED
- Power Supply: 28 VDC
- Power Consumption: 7 W
- MTBF > 20.000 FH
- Operating Temperature: -55°C to +80°C
- RTCA DO-160G Compatible
- MIL-STD-810G & MIL-STD-461F Qualified
- MIL-STD-3009 Compatible
- Socket: D38999/20JA35PN



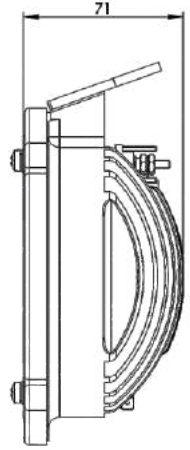
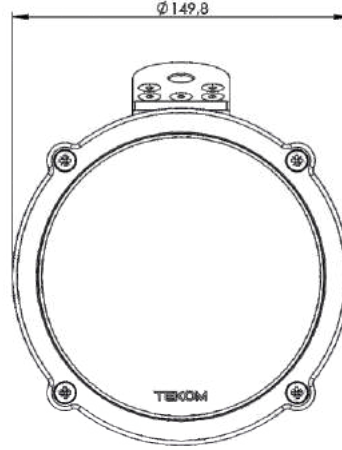
### LANDING LIGHT

500130



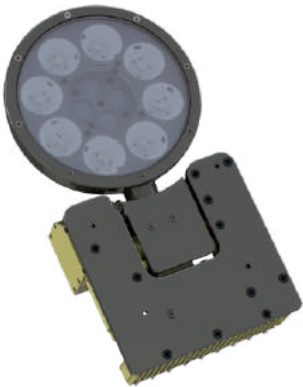
#### Technical Specifications

- Light Source: LED
- Power Supply: 28 VDC
- Power Consumption: 20 W
- Intensity: > 75.000 CD
- Operating Temperature: -55°C to +80°C
- RTCA DO-160G Compatible
- MIL-STD-810G & MIL-STD-461F Qualified



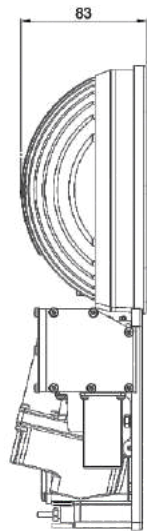
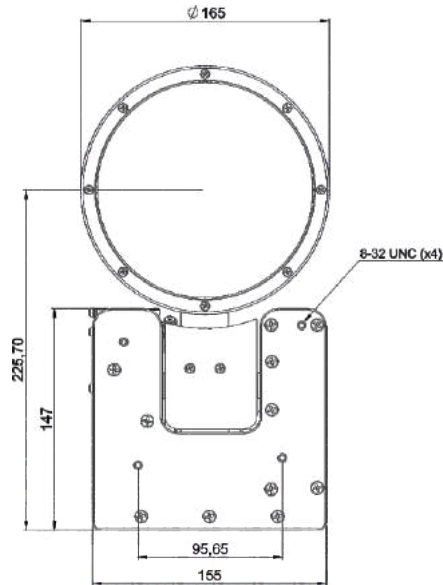
### SEARCHLIGHT

500140



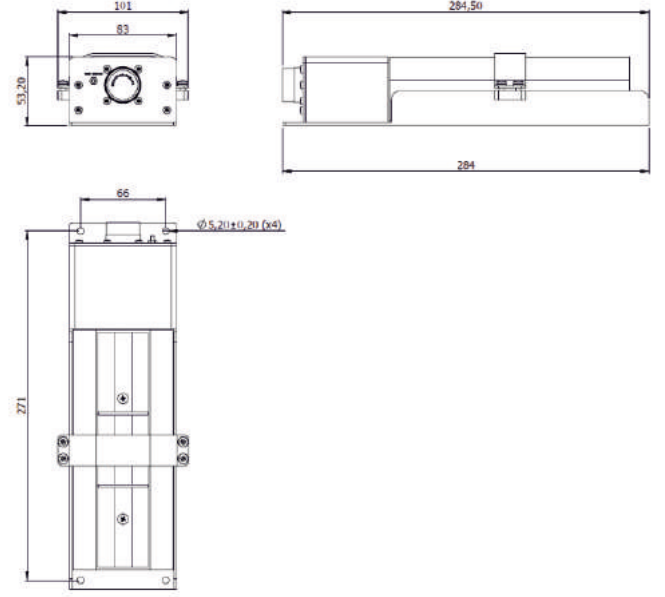
#### Technical Specifications

- Light Source: LED
- Dual Mode: Visible + IR
- Power Supply: 28 VDC
- Power Consumption: 110 W
- Intensity: > 300.000 cd 10° @ 10% Peak
- 360° Continuous Rotation
- Retractable
- MIL-L-81174 / 2 Compatible



### EMERGENCY LIGHTING POWER SUPPLY

500200

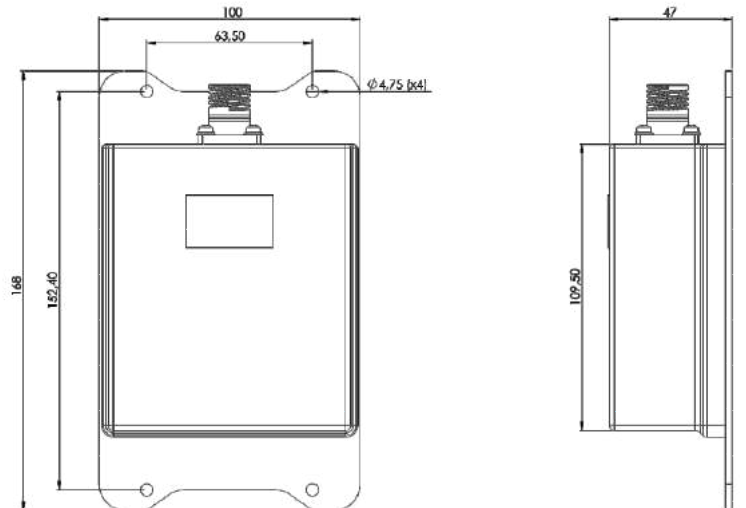


#### Technical Specifications

- Modes: ON/ARM/OFF, Self Test
- Power Supply: 28 VDC
- Capacity: > 30 minutes for 10W Load
- MTBF > 20.000 FH
- Operating Temperature: -55°C to +80°C
- RTCA DO-160G Compatible
- MIL-STD-810G & MIL-STD-461F Qualified
- Socket: MS24264R16B24PN

### POWER SUPPLY FOR POSITION LIGHTING

500210

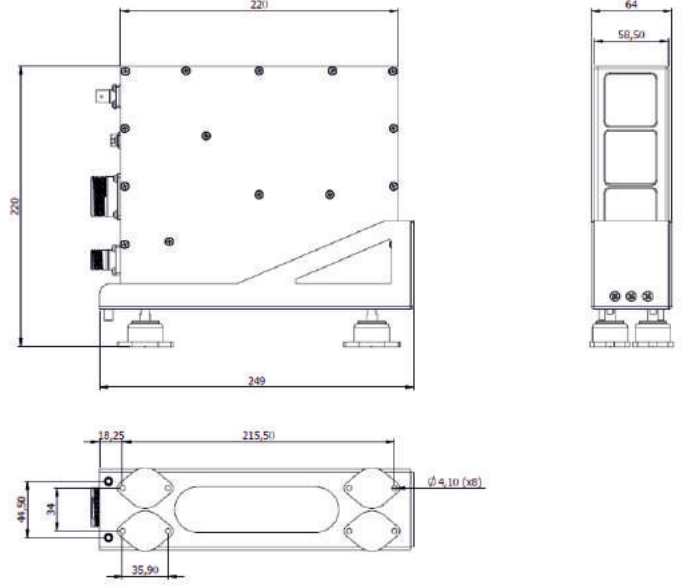


#### Technical Specifications

- Housing: Aluminum
- Coating: Chromate Conversion
- Dual Mode: Visible + IR
- Power Supply: 28 VDC, 20W
- MTBF > 20.000 FH
- Connector: D38999/20JC35PN
- Functions: Steady / Flash, High / Mid / Low

### AIS RECEIVER

TK-01-8101418

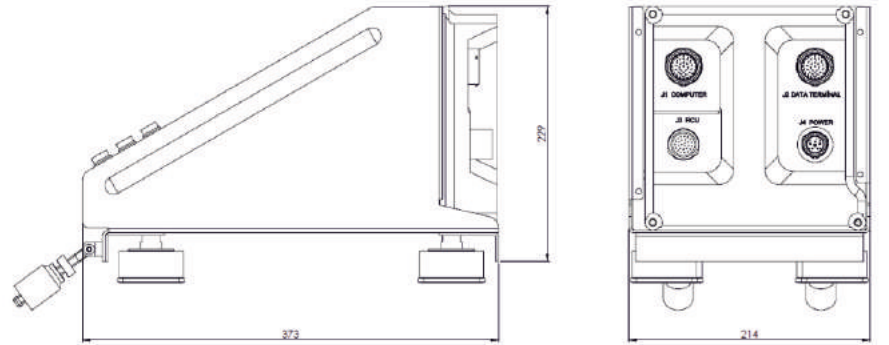


#### Technical Specifications

- Material: Aluminum
- Coating: Anodizing (Black)
- Power: 18-36 VDC
- Power Consumption: 5 W
- RS-232 Data Speed: 38400 baud (default)
- Data Format: NMEA 0183 V3
- Ethernet Modes: TCP Server/Client, UDO Server/Client
- Frequency: AIS1 161.975 Mhz, AIS2 162.025 Mhz

### MOUNTING BASE (MT-4416/A)

TK-03-4000613



#### Technical Specifications

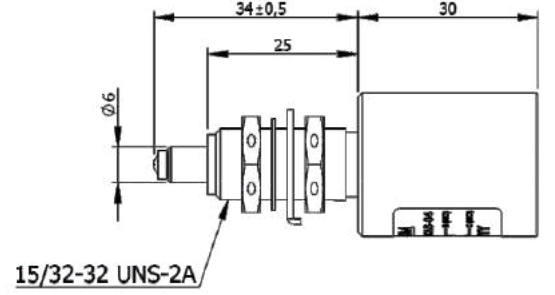
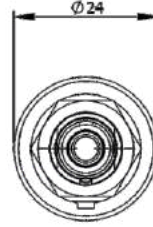
- For Use With/On: Kg-40 Generator
- Material: Aluminum
- Coating: Alodine
- Style Designator: Tray type w/chasis
- Vibration Mount Type: Cup
- NSN: 5975-01-230-9416

#### Sockets

- J1&J2: MS3122E20-41P
- J3: M81511/21EE02B1
- J4: MS3122E14-5P

### LIMIT SWITCH

LS2.322.1S.CAS-04

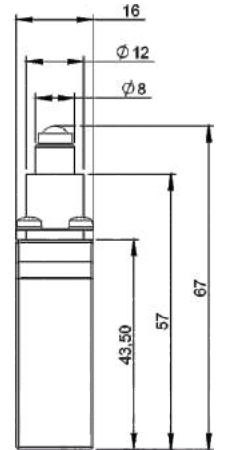
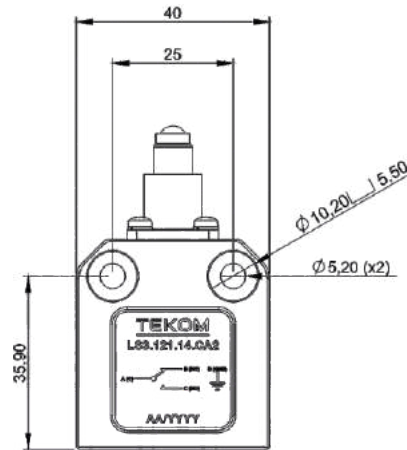


#### Technical Specifications

- Material: Stainless Steel
- Operating Temperature: (-55°C / +60°C)
- Operation Force: 30 ± 5 N
- IP 67 Sealing
- MIL-S-8805 & MIL-STD-202 Compatible

### LIMIT SWITCH

LS3.121.14.CA2



#### Technical Specifications

- Housing: Aluminum
- Actuator: Stainless Steel
- Coating: Cataphoresis
- Operating Temperature: (-40°C / +85°C)
- Operation Force: 15 ± 5 N
- IP 67 Sealing
- MIL-S-8805 & MIL-STD-202 Compatible



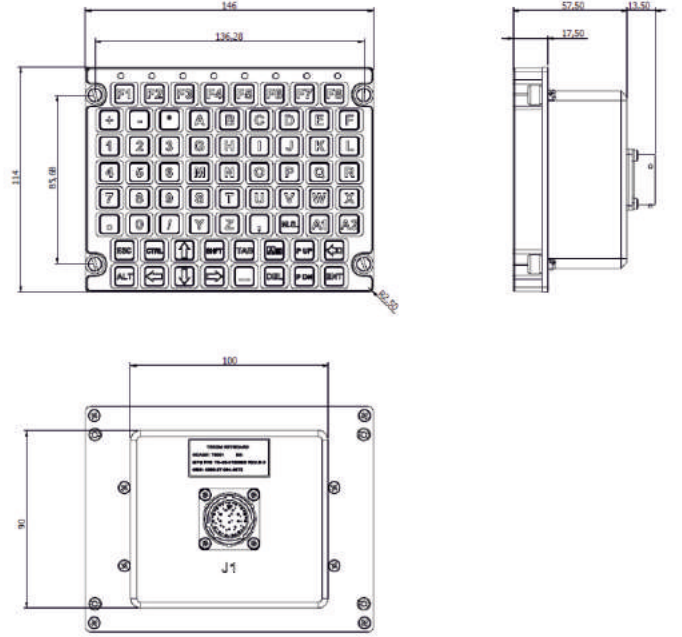
**KEYBOARD**

**TK-03-0150603**



**Technical Specifications**

- Body Material: Aluminum
- Coating: Anodizing (Black)
- Power Supply: 12 VDC
- Connection Interface: USB - RS232 - PS/2
- MIL-STD-3009 Compatible
- Socket: KPT02E1626P (MIL-DTL-26482)

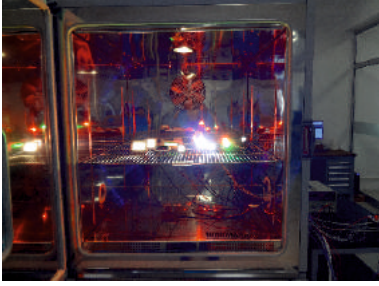


## QUALIFICATION TESTS

Within the scope of design verification studies, our products have been compliant with;



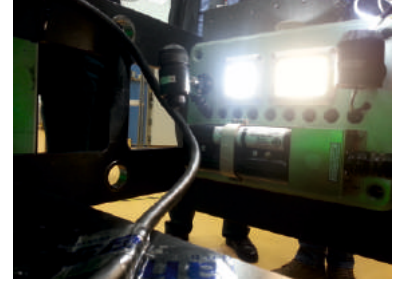
RTCA-DO-160G  
MIL-STD-461F  
MIL-STD-810G  
MIL-STD-704F  
MIL-STD-3009  
CS-23 / CS-25 / CS-29



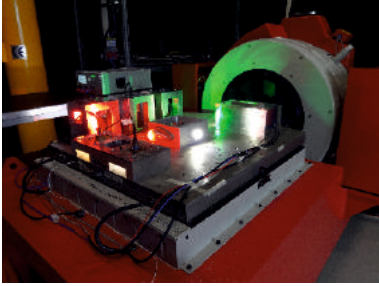
**Temperature**



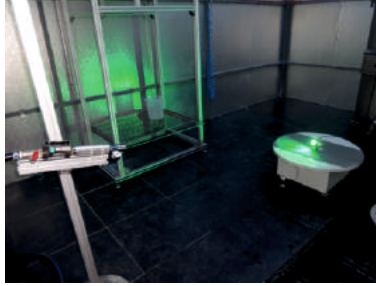
**Lightning Effects**



**Acceleration**



**Vibration&Shock**



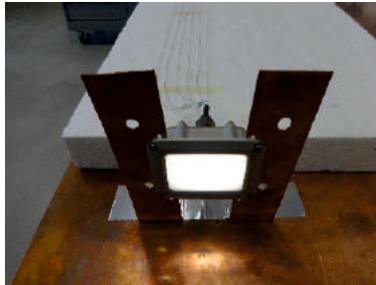
**Waterproofness**



**Explosive Atmosphere**



**Altitude**



**EMI/EMC**



**Sand&Dust**



Firmamızda tüm süreçlerimiz TS EN ISO 9001:2015 standardına uygun olarak yürütülmektedir.

Her **TEKOM** çalışanı, ürünün kalitesinden ve en az maliyetle üretilmesinden doğrudan sorumludur.



# TEKOM

## Savunma ve Havacılık Sanayi A.Ş.



Ertuğrul Gazi Mh. İnegöl Cd. No:7  
Kartepe- Kocaeli / TURKEY



+90 262 371 53 13 - 14



+90 262 371 18 28



info@tekom.com.tr



www.tekom.com.tr